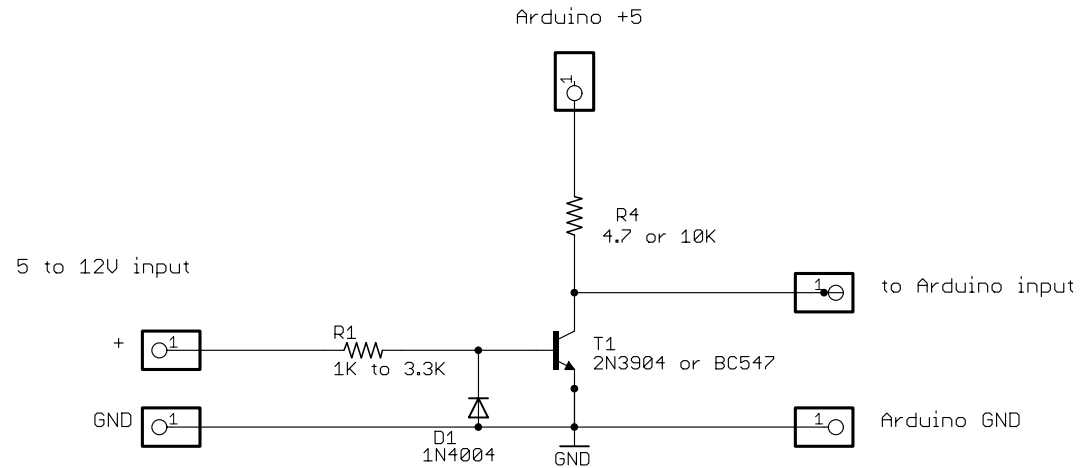
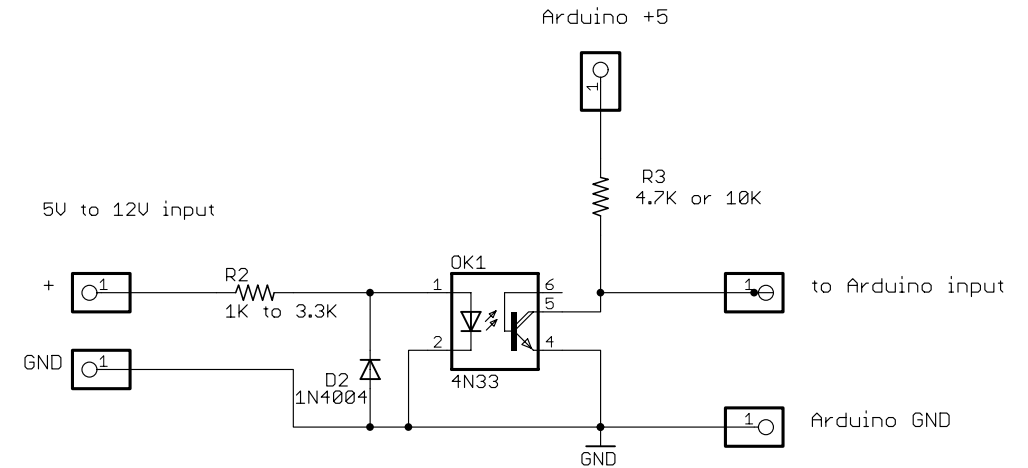


How to sense 12V or higher circuitry with the Arduino

Method 1: transistor level converter



Method 2: optoisolator level converter



Notes

- * Change R1 or R2 to 10K ohms for volages inputs higher than 12V
- * OK to connect 12V ground to Arduino, but not positive 12V source!
- * Optoisolator version gives excellent noise isolation, as these is no current path through Arduino Circuitry
- * Lots of optoisolators will work: 4N33, TL117, 6N138... check the data sheet
- * Diodes only required if input is AC, or swings below 0V